

BLUED &
STAINLESS



CALIBER
.45

RUGER®
OLD ARMY®
Percussion Revolvers



All parts orders for the Old Army should be sent to: Sturm, Ruger & Co., Inc., Service Department, 411 Sunapee Street, Newport, New Hampshire 03773, 603-863-3300. We cannot comply with open account or C.O.D. orders. Payment in the form of a check, money order, Visa or MasterCard must accompany your order. Credit card orders must include the account number, expiration date and whether it is a Visa or MasterCard account. Minimum parts order is \$1.00 plus \$3.50 shipping and handling charge. Order parts by Part Name and Part Number and include the entire serial number of the firearm for which the parts are being ordered and specify whether blued or stainless steel. The price shown for parts does not include the minimum net labor charge of \$15.00 plus \$5.00 shipping and handling charge. All factory fitted parts are fit on an exchange basis only. We will not return the replaced parts. The charge for metal refinishing is \$35.00 plus a \$5.00 shipping and handling charge. Custom gunsmithing service or nonstandard alterations are **NOT AVAILABLE**.

IMPORTANT — REGARDING PARTS ORDERING. Old Army revolvers are manufactured in Blued steel and Stainless steel versions. **WHEN ORDERING PARTS BE SURE TO STATE WHETHER YOUR REVOLVER IS BLUED OR STAINLESS. ALSO, INCLUDE THE COMPLETE SERIAL NUMBER.**

NOTE: Where there is no price listed under the “Blued” column heading, it means that the listed part is available in stainless steel only and is for use in the blued and stainless steel models. A few components, as example sight blades and grip panels, are the same for blued and stainless models.

BARREL NOTE: All barrels are marked with safety message. (“Before using gun, read warnings in Instruction Manual available free from Sturm, Ruger & Co., Inc., Southport, CT, USA”.)

Because it is a serial-numbered component part, the frame of a revolver is defined as a “firearm” by Federal Law and is not offered for sale separately.

Design, specifications and prices are subject to change without notice. The Sturm, Ruger & Company “LOGO”, “RUGER” and “OLD ARMY” are registered U.S. trademarks.

STURM, RUGER & Company, Inc.
Southport, Connecticut 06490 U.S.A.

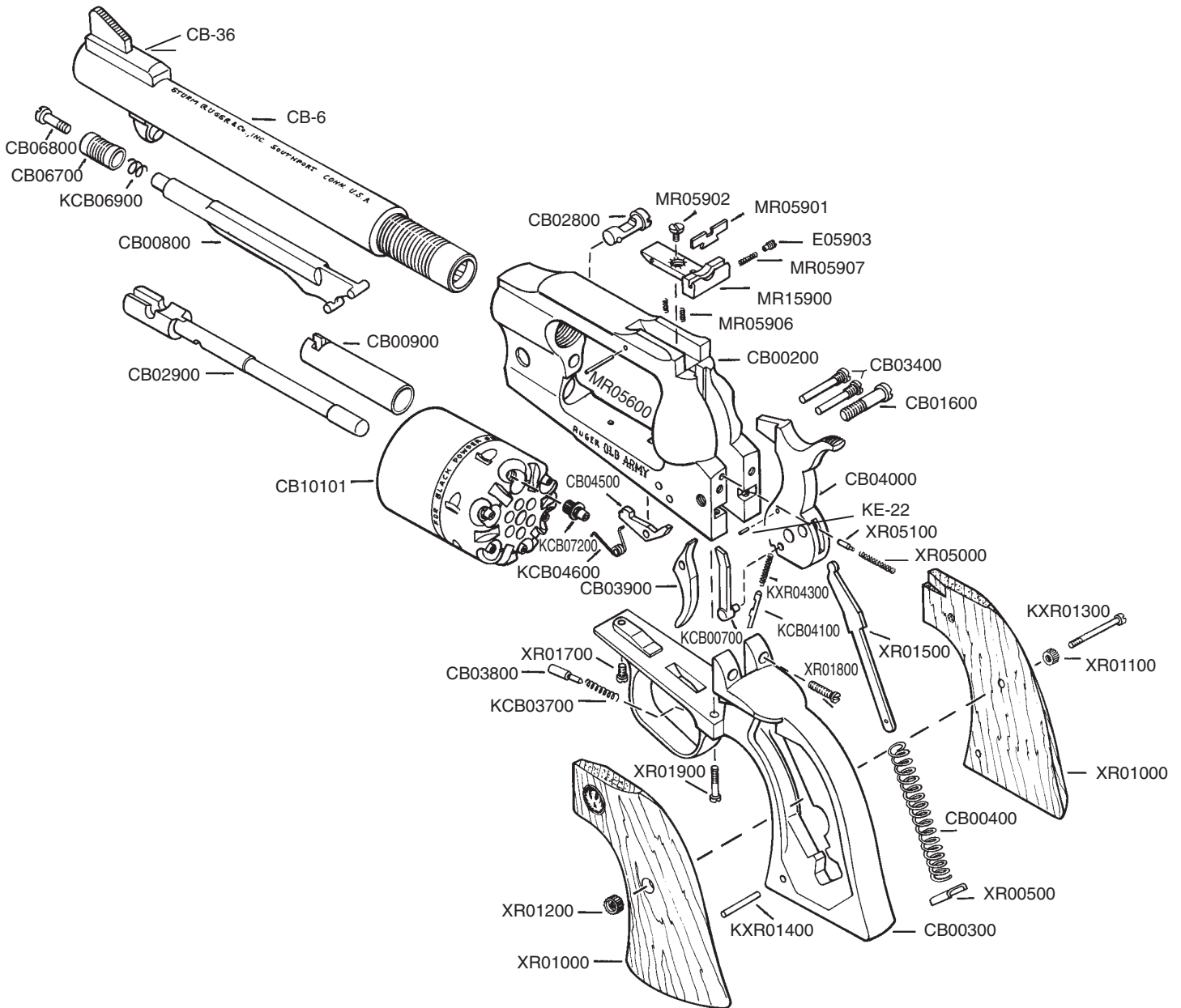
OLD ARMY®

COMPONENT PARTS AND SUGGESTED RETAIL PRICES ORDER THESE PARTS FROM NEWPORT PLANT

Part Name	Part No.	Model	Caliber		
			.45	Blued	Stainless
* Barrel Assembly Complete	CB-6	Old Army	•	\$33.75	\$55.50
Base Pin	CB02900	Old Army	•	14.00	16.50
Base Pin Retaining Pin Assembly	CB02800	Old Army	•	3.75	4.75
Bullet Rammer	CB00900	Old Army	•	7.50	8.00
* Cylinder	CB10101	Old Army	•	57.75	82.00
Cylinder Frame	CB00200	Old Army	•	Not Offered For Sale	
Cylinder Latch	CB04500	Old Army	•	1.25	1.75
Cylinder Latch Pivot	CB03400	Old Army	•	1.50	2.00
Cylinder Latch Spring	KCB04600	Old Army	•	.50	.50
Front Sight, Adjustable	CB-36	Old Army	•	5.00	—
Front Sight, Fixed, Not Illustrated	CB03610	Old Army	•	4.50	4.75
Front Sight Base, Adjustable	KMR13601	Old Army	•	—	4.50
Front Sight Blade, Adjustable, Stainless Steel Model Only	CB03600	Old Army	•	1.50	—
Front Sight Cross Pin, Adjustable	KE-26	Old Army	•	—	.50
Grip Frame — Standard	CB00300	Old Army	•	80.00	82.50
Grip Frame Screw-A-Front	XR01700	Old Army	•	.50	.50
Grip Frame Screw-B-Back (2 Req'd.)	XR01800	Old Army	•	ea. .50	ea. .50
Grip Frame Screw-C-Bottom	XR01900	Old Army	•	.50	.50
Grip Panels, Sold in Pairs Only	XR01000	Old Army	•	34.00	34.00
Grip Panel Dowel	KXR01400	Old Army	•	—	.50
Grip Panel Ferrule, Left	XR01200	Old Army	•	.50	—
Grip Panel Ferrule, Right	XR01100	Old Army	•	.50	—
Grip Panel Screw	KXR01300	Old Army	•	—	.50
Hammer	CB04000	Old Army	•	22.25	24.75
Hammer Pivot	CB01600	Old Army	•	3.00	3.50
Hammer Plunger	KCB04100	Old Army	•	—	3.00
Hammer Plunger Pin	KE-22	Old Army	•	—	.50
Hammer Plunger Spring	KXR04300	Old Army	•	—	.50
Hammer Strut	XR01500	Old Army	•	.50	1.25
Loading Lever	CB00800	Old Army	•	18.75	19.25
Loading Lever Latch	CB06700	Old Army	•	1.25	2.00
Loading Lever Latch Screw	CB06800	Old Army	•	1.00	1.50
Loading Lever Latch Spring	KCB06900	Old Army	•	—	.50
Mainspring	CB00400	Old Army	•	.50	1.00
Mainspring Seat	XR00500	Old Army	•	.50	.50
Medallion, 2 Req'd., Not Illustrated	XR05200	Old Army	•	ea. 1.25	—
Nipple	KCB07200	Old Army	•	—	1.50
Nipple Wrench, Not Illustrated	CB07300	Old Army	•	3.75	—
Pawl	KCB00700	Old Army	•	—	2.75
Pawl Plunger	XR05100	Old Army	•	.50	1.00
Pawl Plunger Spring	XR05000	Old Army	•	.50	.50
Rear Sight Assembly, Complete, Adjustable	MR15900	Old Army	•	8.25	—
Specify whether sight has bump on underside.					
Rear Sight Elevation Screw, Adjustable	MR05902	Old Army	•	.50	—
Rear Sight Blade, Adjustable	MR05901	Old Army	•	1.50	—
Rear Sight Elevation Spring, Adjustable (2 Req'd.)	MR05906	Old Army	•	ea. .50	—
Rear Sight Pivot Pin, Adjustable	MR05600	Old Army	•	.50	.50
Rear Sight Windage Adjustment Screw, Adjustable	E05903	Old Army	•	.50	—
Rear Sight Windage Spring, Adjustable	MR05907	Old Army	•	.50	—
Trigger	CB03900	Old Army	•	10.25	12.75
Trigger Pivot Screw	CB03400	Old Army	•	1.50	2.00
Trigger Plunger	CB03800	Old Army	•	.50	.75
Trigger Spring	KCB03700	Old Army	•	—	.50

*Parts designated by an asterisk must be factory fitted. These parts are fitted on an exchange basis only. We will not return the replaced parts. We will not return any part that is broken, malfunctioning, badly worn or has been modified. See "Warning — Parts Purchasers" opposite page.

OLD ARMY®



WARNING—PARTS PURCHASERS



It is the purchaser's responsibility to be absolutely certain that any parts ordered from the factory are correctly fitted and installed. Firearms are complicated mechanisms and IMPROPER FITTING OF PARTS MAY RESULT IN A DANGEROUS MALFUNCTIONING, DAMAGE TO THE FIREARM AND INJURY TO THE SHOOTER AND OTHER PERSONS. The purchaser and installer of parts must accept full responsibility for the correct adjustment and functioning of the firearm after such installation.

PARTS MUST FIT CORRECTLY